



S3 Series Plastic Push-pull Connectors

S3-ver1.3

RoHS compliant S3 series plastic circular connector is a push-pull connector with self-latching system. It is compact, light, durable and simple to operate. Size M14 is compatible with Lemo / Redel 1P series. S3 series has been widely used for applications like medical, test and instrumentation.

Technical Parameters

Environmental

Working temperature: $-40^{\circ}\text{C} \sim 105^{\circ}\text{C}$
 IP degree: IP50

Mechanical

Cycle of contacts: $>5,000$
 Cycle of connectors: $>3,000$
 Total insertion force: $9\sim 12\text{N}$

Electrical

Insulation resistance (normal ambient): $\geq 5,000\text{M}\Omega$

Contact resistance:

$\phi 1.25$ contact $\leq 3\text{ m}\Omega$; $\phi 0.9$ contact $\leq 5\text{ m}\Omega$; $\phi 0.7$ contact $\leq 7\text{ m}\Omega$, $\phi 0.5$ contact $\leq 9\text{ m}\Omega$

Current and voltage:



Number of contacts	M14				
	Contact diameter(mm)	AWG. max	Rated current (A)	Rated voltage (V)	
				VDC	VAC
2	$\phi 1.25$	20	9	500	350
4	$\phi 0.9$	22	7	500	350
5	$\phi 0.9$	22	6	400	250
6	$\phi 0.7$	26	5	400	250
7	$\phi 0.7$	26	4	400	250
8	$\phi 0.7$	26	4	400	250
10	$\phi 0.5$	28	3	300	250
14	$\phi 0.5$	28	2	250	200



Nomenclature

S3 - 14 PA N - M 06 P - G B 52
 1 2 3 4 5 6 7 8 9 10

1. Series

S3, shell material is PC and insulator material is PA66

2. Mounting size

M14 mm

3. Connector model

PA-straight plug, with back nut

PB-straight plug, with back nut for fit with strain relief

RA-fixed receptacle with 2 nuts, front mount rear lock

RC-fixed receptacle with 2 nuts, front and rear mounting.

(New models can be developed upon request)

4. Keying code

M14, N, A

5. Insert type

M - multi-pole type

6. Number of contacts

M14: 2, 4, 5, 6, 7, 8, 10, 14

7. Contact style

P-pin contact; S-socket contact; B-PCB socket contact

8. Shell colour

G-grey, K-black

9. Colour identification (colour of plastic nut and back nut)

K-black, B-blue, G-grey, Y-yellow, T-brown, N-green R-red

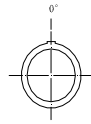
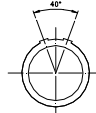
10. Maximum cable O.D.

Please specify cable outer diameter when ordering. "52" means up to 5.2mm cable. Please refer to page 3 "Accessories•collet" to see adaptable cable O.D. ranges. Receptacle does not have this digit.

Materials

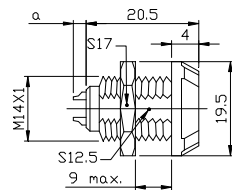
Part	Material	Remark
Insulator	PA66	-
Receptacle shell/front nut	PC	-
Plug shell/tail nut	PC	-
Pin contact	Brass	Gold plating
Socket contact	Bronze	Gold plating
Hex nut	Brass	Nickel plating

Keying

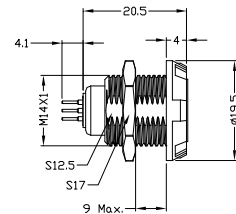
Code	N	A
Key angle		

Connector Models (mm)

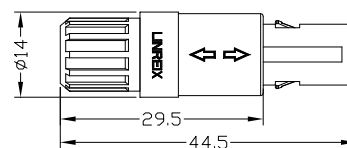
RC receptacle (solder termination)



RC receptacle (PCB termination)

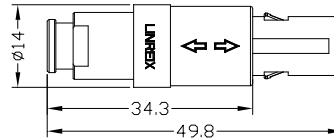


PA plug



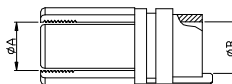


PB plug



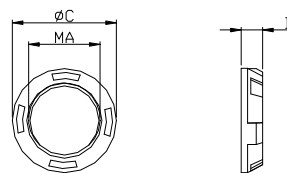
Accessories (mm)

Collet



Part Number	ΦA (mm)	ΦB (mm)	Cable O.D. (mm)	
			Min	Max
S3-14C-26	2.6	6.5	1.0	2.6
S3-14C-39	3.9	6.5	2.7	3.9
S3-14C-52	5.2	6.5	4.0	5.2
S3-14C-65	6.5	6.5	5.3	6.5

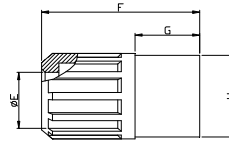
Plastic front nut



Part No.	MA(mm)	ΦC(mm)	D(mm)	Colour
S3-14FN-G	14	18.5	4.0	Grey
S3-14FN-K	14	18.5	4.0	Black
S3-14FN-R	14	18.5	4.0	Red
S3-14FN-N	14	18.5	4.0	Green
S3-14FN-B	14	18.5	4.0	Blue
S3-14FN-Y	14	18.5	4.0	Yellow
S3-14FN-T	14	18.5	4.0	Orange

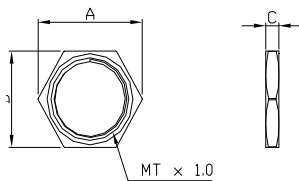


Back nut



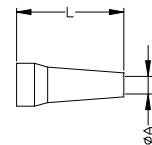
Part No.	ΦE (mm)	F (mm)	G (mm)	H (mm)	Color
S3-14BN-G	6.5	22.2	9.3	11.4	Grey
S3-14BN-K	6.5	22.2	9.3	11.4	Black
S3-14BN-R	6.5	22.2	9.3	11.4	Red
S3-14BN-N	6.5	22.2	9.3	11.4	Green
S3-14BN-B	6.5	22.2	9.3	11.4	Blue
S3-14BN-Y	6.5	22.2	9.3	11.4	Yellow
S3-14BN-T	6.5	22.2	9.3	11.4	Orange

Metal hex nut



Part No.	A	B	MT	C
S3-14HN	19.4	17	14	2.5

Strain relief

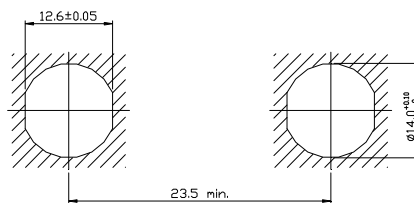


Item	L-12SR- ϕ 40	L-12SR- ϕ 50	L-12SR- ϕ 60
ØA	3.9	5.5	5.8
L	30	30	30
Cable O.D. max.	4.0	5.0	6.0
Cable O.D. min.	3.5	4.5	5.5

Note: “□” denotes a colour, K-black, B-blue, G-grey, Y-yellow, T-brown, N-green R-red

Installation (mm)

Panel cut-out



Hex nut torque=1.5N·m