



Shanghai Linreix Electronics Ltd.

No. 2-601, Lane 369, Feihong Road, Shanghai 200086, China
Tel: +86.21.65639960 Fax: +86.21.65631380 URL: www.linreix.com

S 5 Series Push-pull Coaxial Connector

S5 series push-pull connector is similar with Lemo coaxial connectors. It is characterized with fine workmanship, stylish looking, easy operation and reliable connection.

S1 series is suitable for applications in need of space-saving and frequent operation. It is widely used in the fields like measurement, test and communication.

Technical Characteristics

Climatic

Temperature: $-55^{\circ}\text{C} \sim +150^{\circ}\text{C}$
Relative humidity: at $40 \pm 2^{\circ}\text{C}$, $90 \pm 3\%$

Mechanical

Endurance: $>3,000$ cycles

Electrical

Characteristic impedance: 50Ω
Working frequency: $0 \sim 1\text{GHz}$
VSWR: ≤ 1.3
Operating voltage(50Hz): 500VAC
Test voltage(50Hz): 1500VAC
Rated current: $2 \sim 4\text{A}$
Contact resistance: $\leq 10\text{m} \Omega$





Shanghai Linreix Electronics Ltd.

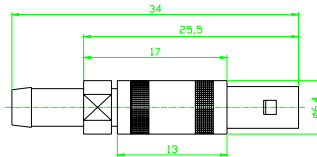
No. 2-601, Lane 369, Feihong Road, Shanghai 200086, China
Tel: +86.21.65639960 Fax: +86.21.65631380 URL: www.linreix.com

Materials

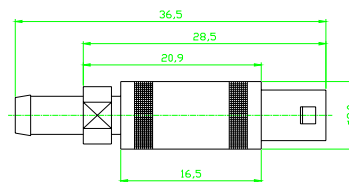
Part	Material Description	Remark
Insulator	PTFE	
Receptacle shell	Brass	Nickel plated
Plug outer shell	Brass	Nickel plated
Latch sleeve	Bronze	Nickel plated
Cable lead-through	Brass	Nickel plated
Cable collet	Brass	Nickel plated
Pin contact	Brass	Gold plated
Socket contact	Bronze	Gold plated
Earth washer	Brass	Nickel plated
Nut	Brass	Anodized or nickel plated
Strain relief	PVC	Rigid

Dimensions

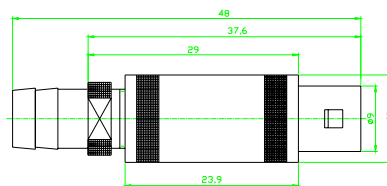
1. Straight plug



Size M7



Size M8



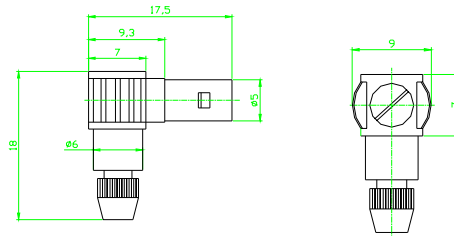
Size M12



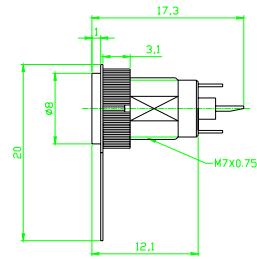
Shanghai Linreix Electronics Ltd.

No. 2-601, Lane 369, Feihong Road, Shanghai 200086, China
Tel: +86.21.65639960 Fax: +86.21.65631380 URL: www.linreix.com

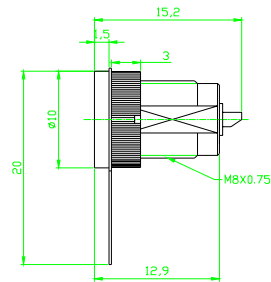
2. Right angle plug



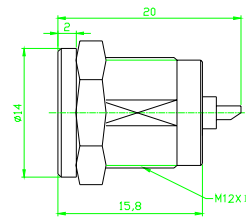
3. Straight receptacle of full-range thread



Size M7



Size M8



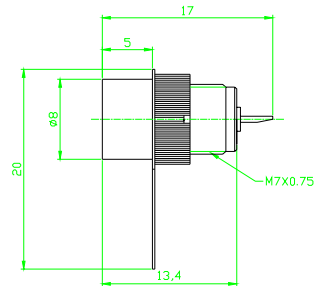
Size M12



Shanghai Linreix Electronics Ltd.

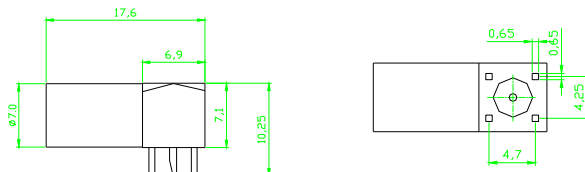
No. 2-601, Lane 369, Feihong Road, Shanghai 200086, China
Tel: +86.21.65639960 Fax: +86.21.65631380 URL: www.linreix.com

Straight receptacle of half-range thread



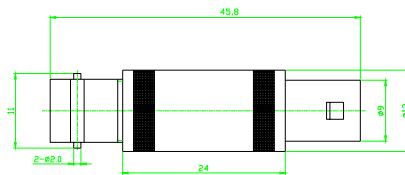
Size M7

Elbow receptacle for printed circuit



Size M7

Adapter



S5 to BNC, Size M12

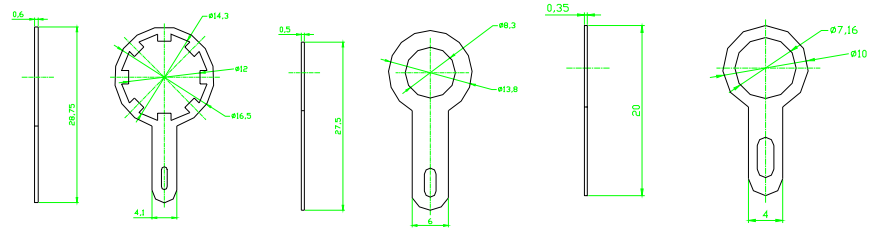


Shanghai Linreix Electronics Ltd.

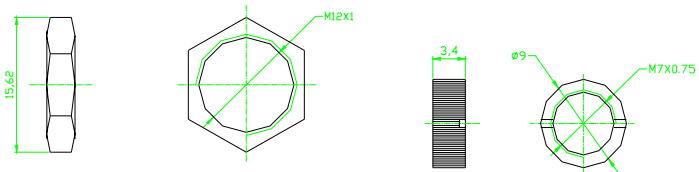
No. 2-601, Lane 369, Feihong Road, Shanghai 200086, China
Tel: +86.21.65639960 Fax: +86.21.65631380 URL: www.linreix.com

Accessories

1. Earth washers



2. Nuts



3. Strain reliefs

